

# The Builders Brief

“Assemblies of God World Missions”



## Haiti Rebuilding Underway, Chile Next!

On January 12th, Haiti was hit with a magnitude 7.0 earthquake, later statistics place the devastation at over 240,000 dead, and nearly two million homeless. We are proud to report that the Assemblies of God was one of the first to respond with food, water, medicine and other emergency needs. Convoy of Hope, Health Care ministries and Builders International are partnering together to make a difference in Haiti!

place with priorities set to work project by project, pastor by pastor until the work is completed.

**Chile Quake Registered 8.8!** Perhaps you did not get on the calendar to help in Haiti, Please consider a trip to Chile! For help connecting with the Disaster Reconstruction efforts in HAITI or CHILE, just contact our offices by phone, email, or regular mail. Our contact info is on page 2.

**Help on the Way** Our office bustled this Spring, booking 47 teams from June through December 2010 for Haiti, and AG church teams have already filled January & February of 2011!

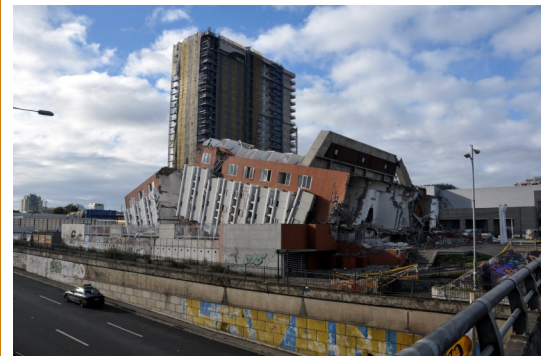


Photo by: Lloyd Smith

BI has been on the scene, first doing damage assessment with our people, churches, and schools, and next taking in teams of pastors to see first hand the devastation and discover how to mobilize their church and respond! A strategic plan is now in

<b>Photos:</b>	<b>p.</b>
Photo #1 Upper Right, Ken & Sherri	1
Photo #2 & #3 Upper Left, children receiving Food from Convoy! By Lloyd Smith	1
Photo #4 Right, Rio Alta—Chile, May	1
Photo #5 Lower Right Sherri with Michele Stoeker at the BI booth in Camp Hill, PA	1
Photo #1 Left pg 2, DR Congo, near completion!	2
David with National Leadership—S. Africa	2
Knife give-away & AG Bible School—Sri Lanka	2

## BI Reaches Out for Project Help at District Council Spring Tour!

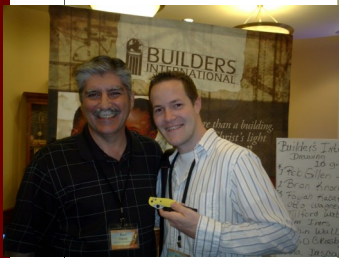
This Spring, the BI team did 16 district councils—yep, from Virginia to California, and from Michigan to South Texas! Sherri and I felt blessed to reconnect with many friends east of the Mississippi at the Tennessee, Kentucky, Pennsylvania-Delaware, New York, and Ohio District Councils.



BI continues to work with all our AGWM missionary family on every continent!

## Catch the Vision

Often, smaller groups of two or three become the catalyst to pull together a larger team; that makes all the difference!



## Other Opportunities — Let's Finish Them!



## Current Projects Needing Completion!

### Priority #1 Africa:

Rustenburg, South Africa: NW Global School of Theology received a 12,000 sq. foot building; now we need teams to put the foundation in and erect the structure!

### Priority #1 Europe:

Brussels, Belgium: European Ministries center needs help modernizing its facility.

### Priority #1 Asia-Pacific:

“One team, one church plant.”  
Manila: The Bayanihan project needs 70 new teams to build 70 new churches on land miraculously furnished by the Holy Spirit through the national church.

### Priority #1 Latin America:

IBRP Bible School in Buenos Aires: This project has

been blessed with multiple teams; now the final chapter needs to be written. The four-story project lacks the 4<sup>th</sup> floor roof and completion of interior classroom walls. Students are already using classrooms with no doors or windows!

Priority #1 Eurasia: Sri Lanka: Dwight Dobson tells us they are only **\$18,000** away from completion!

## More Help Needed—Find Your Purpose on a Team!

TEAMS: If your church didn't get a team date for Haiti, would you consider helping in Chile this Summer or Fall? We have heard of so many testimonies of those whose lives have been changed on a ten day trip! “Iron sharpens iron...”. God's timing is always On Time! Thanks for your reception at the district councils, and thanks for your support of this great ministry! Serving with Joy.... Your Friends: **KEN & SHERRI PATRICK**

**Builders International, P.O. 1969, Ozark, MO 65721; 417-582-0003—office; 330-360-4496—Cellphone; 417-582-1530—Fax; [buildersintlteams@agmd.org](mailto:buildersintlteams@agmd.org), [www.buildersintl.org](http://www.buildersintl.org)**